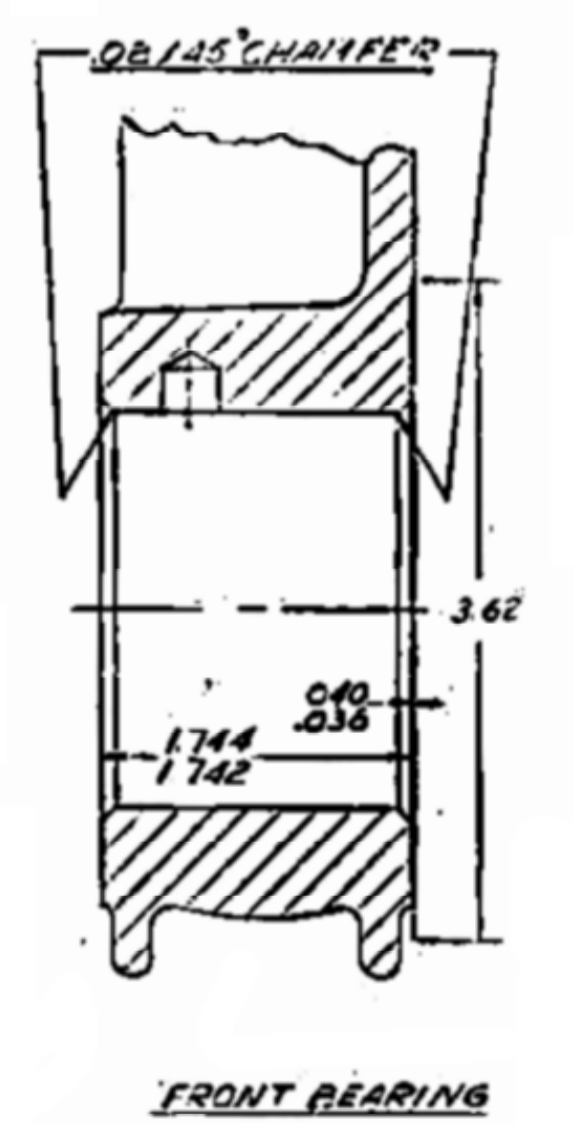
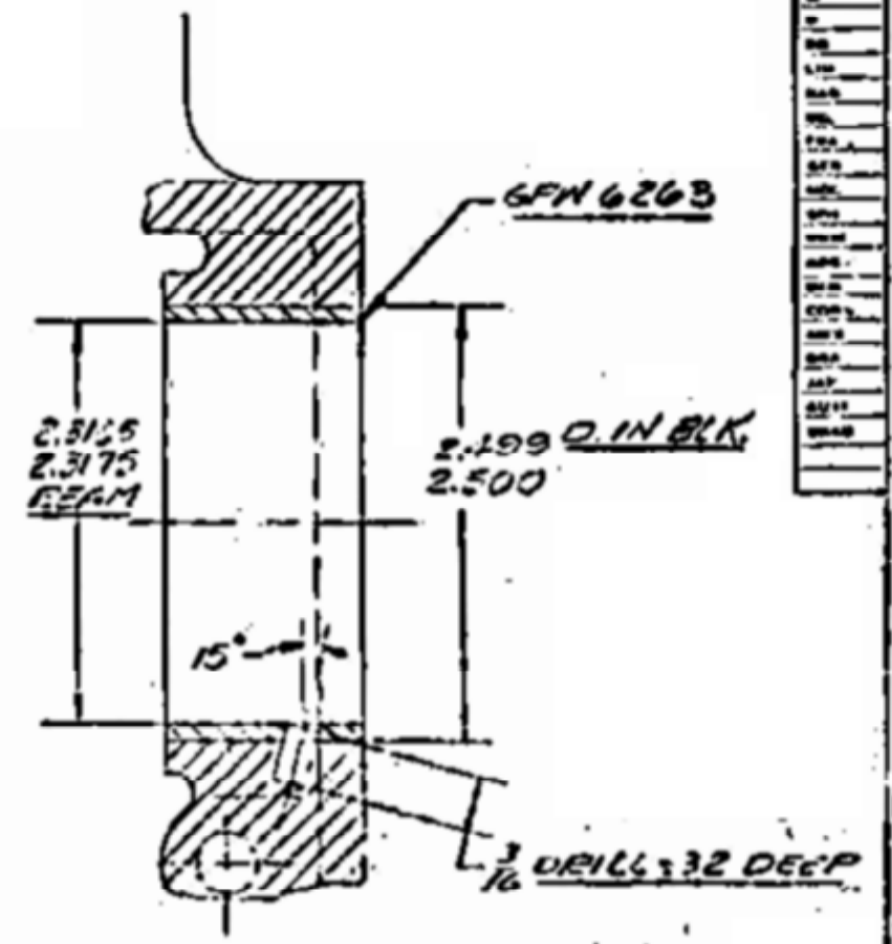
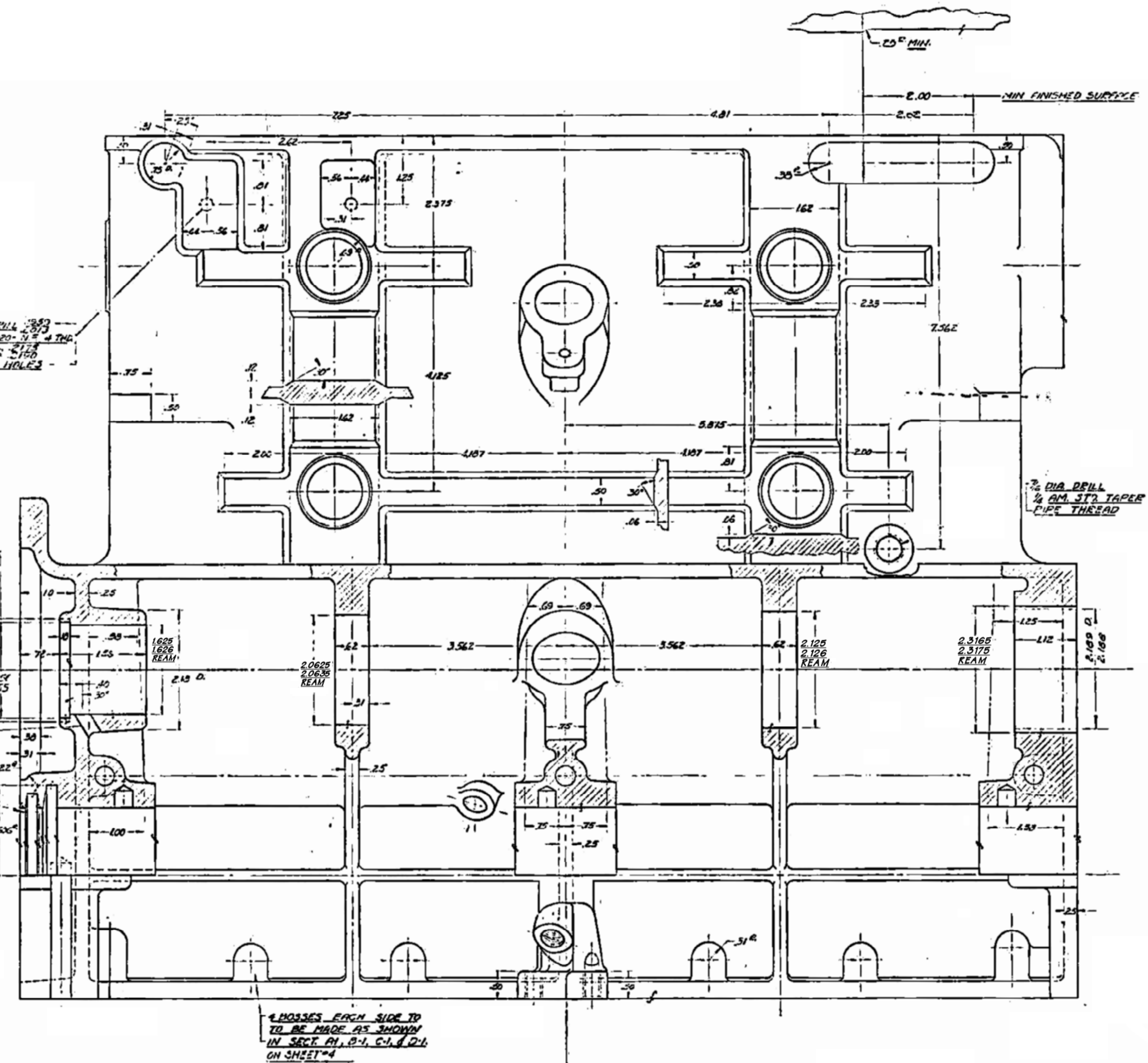


DATE DRAUGHT	10-18-41
DATE COMPLETE	10-21-41
DWG NO.	10-31-41
REV.	7-2
REV.	11-2
REV.	3-8
REV.	5-22-2



SECTION F00000F
SHEET NO. 5

CYLINDER BLOCK
CAST IRON GRADE "A"
BRINELL 179 MIN. TAKEN ON CYLINDER BORES,
BRINELL 229 MAX. TAKEN ON OIL PAN FLANGES.
SHEET #1 OF 5 SHEETS

GPW 6015

GPW 6015