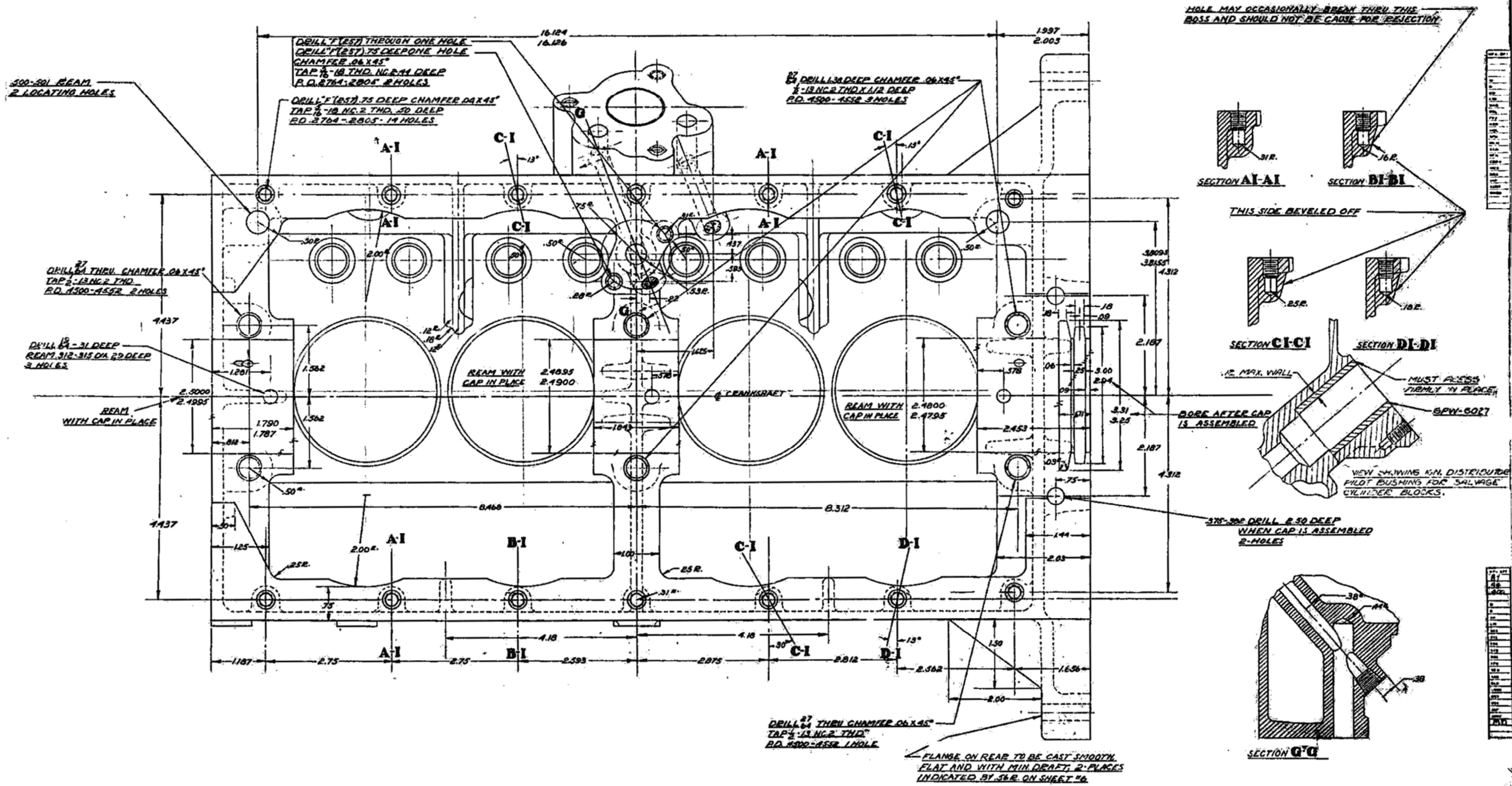


DATE STARTED	10-20-51
DATE COMPLETED	10-22-51
DESIGN	L10 9 1021-91
DRAWN	L10 400 7-2-51
CHECKED	L10 131 0-2-51
APPROVED	L10 150 2-2-51



CYLINDER BLOCK
CAST IRON GRADE "A"

SHEET 4 OF 6 SHEETS

SCHELL ITS MIN. TAKEN ON CYLINDER BORES.
BEINELL .228 TAKEN ON OIL PAN FLANGE