

GPW-6135A

-STD.

ALLOWABLE VARIATION ON DIMENSIONS CONTROLLING FINISHED SURFACES IS $\pm .016$ UNLESS OTHERWISE SPECIFIED. ALL DIMENSIONS IN INCHES.

DRWG. STARTED	10-28-41		
DRWG. COMPLETED	10-28-41		
ENG. INF	SUPP.	REVISED	CK.
L10# 11		11-8-41	
L10	141	1-30-42	HAS
L10 #1401		11-16-43	AS

GPW-6135-B

-001 OVERSIZE

GPW-6135-C

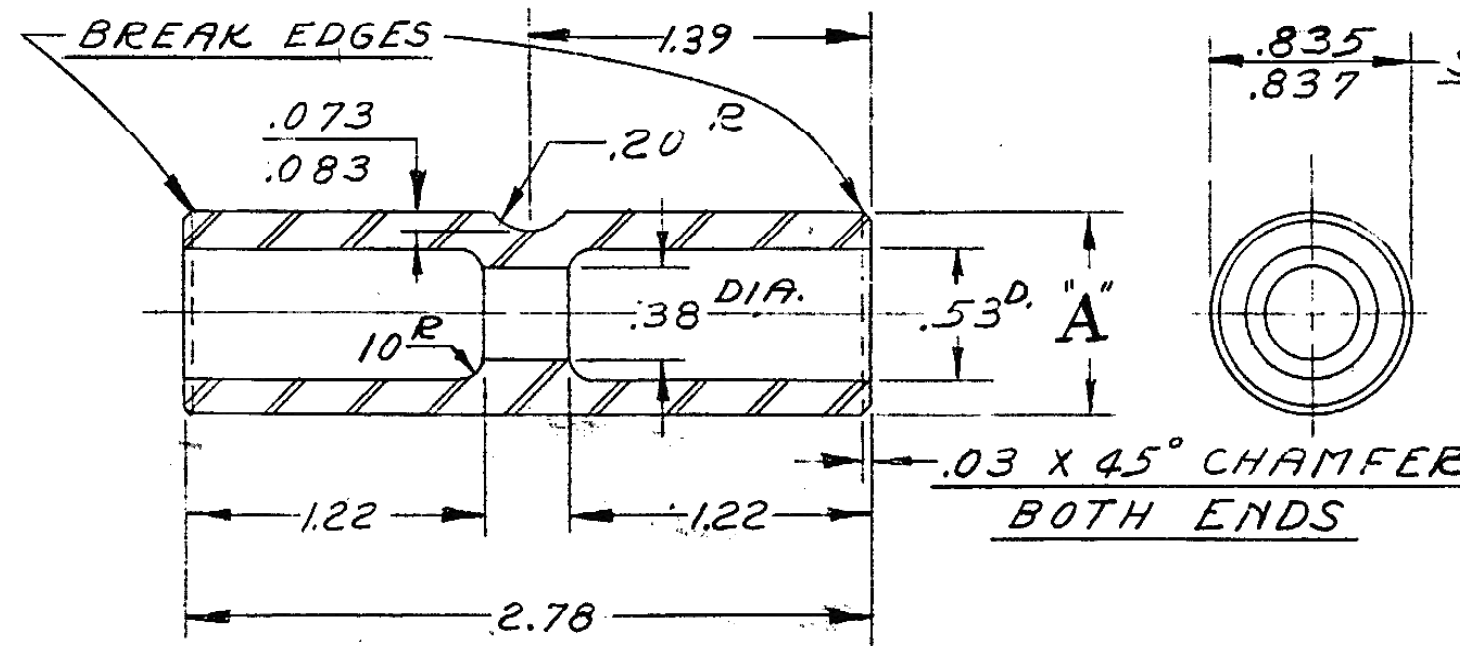
-002 OVERSIZE

GPW-6135-D

-003 OVERSIZE

AR

PART NO.	DIA. "A"
GPW-6135-A	8117-8120
GPW-6135-B	8127-8129
GPW-6135-C	8137-8139
GPW-6135-D	8147-8149



MFG. DPT.
848
410
722
0
B
BD
LIN
DAG
BEL
FRA
GER
HOL
SPN
RUM
ARG
DEN
CORK
MEX
BRA
JAP
AUS
SWED

TREATMENT:-
CARBURIZE, AT 1700° F TO DEPTH OF CASE AFTER
GRINDING .025-.035 HARDEN AND
DRAW TO A MINIMUM ROCKWELL C-60
PINS MUST BE FREE OF SCALE & INSIDE
CASE ALLOWABLE OUT OF ROUND &
TAPER .0001 GRIND & LAP.

PIN-PISTON

TYPE S.A.E. 1020 (CARBON DESIRED .18-.23)
CARBURIZE AT 1700° F

(W) 636961
 116001-2-3

DESIGN	SCALE	DRAWN BY	CK.	O.K.
	FULL	DICKINSON		

FORD MOTOR CO.
 DEARBORN, MICH.

GPW6135-A