

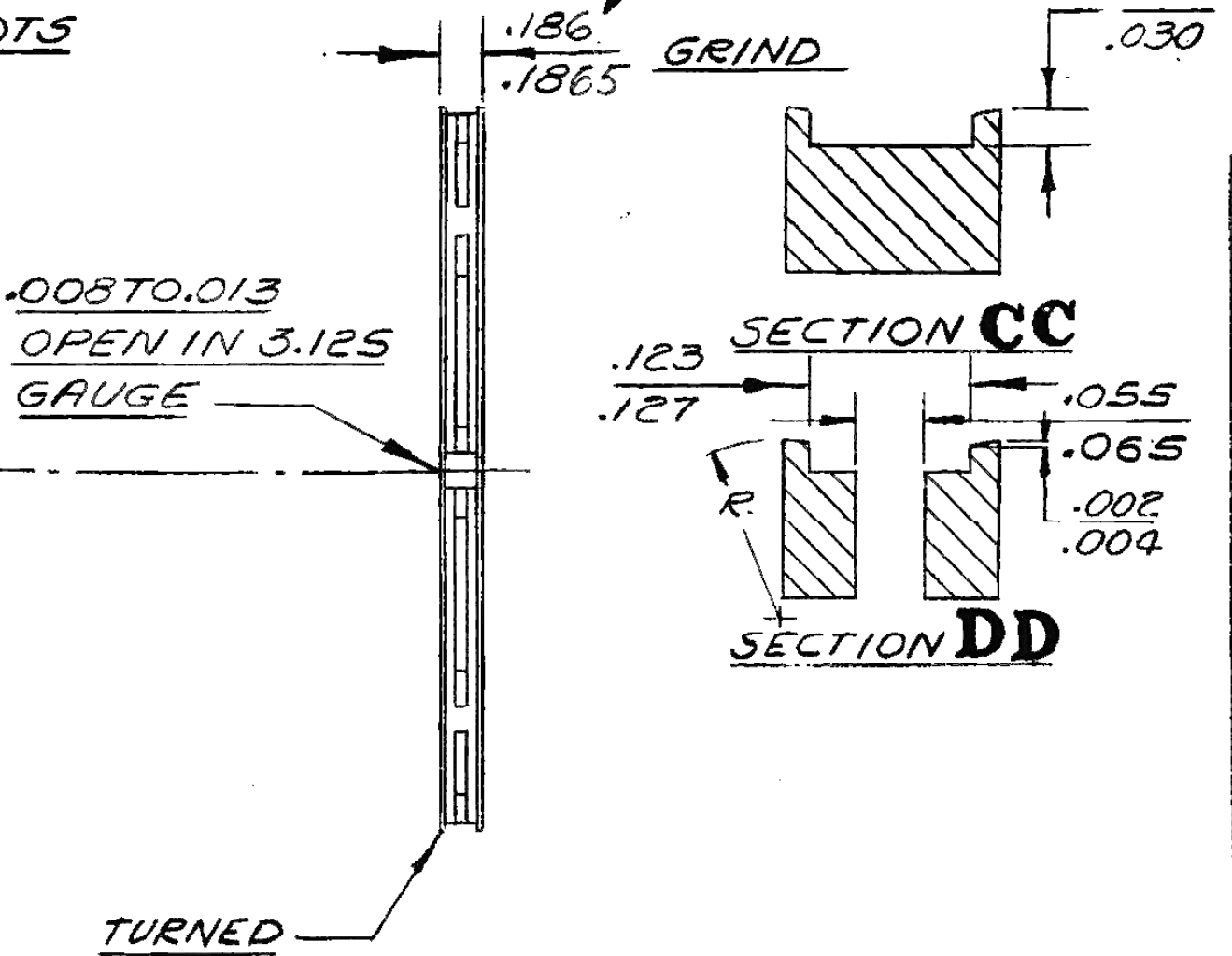
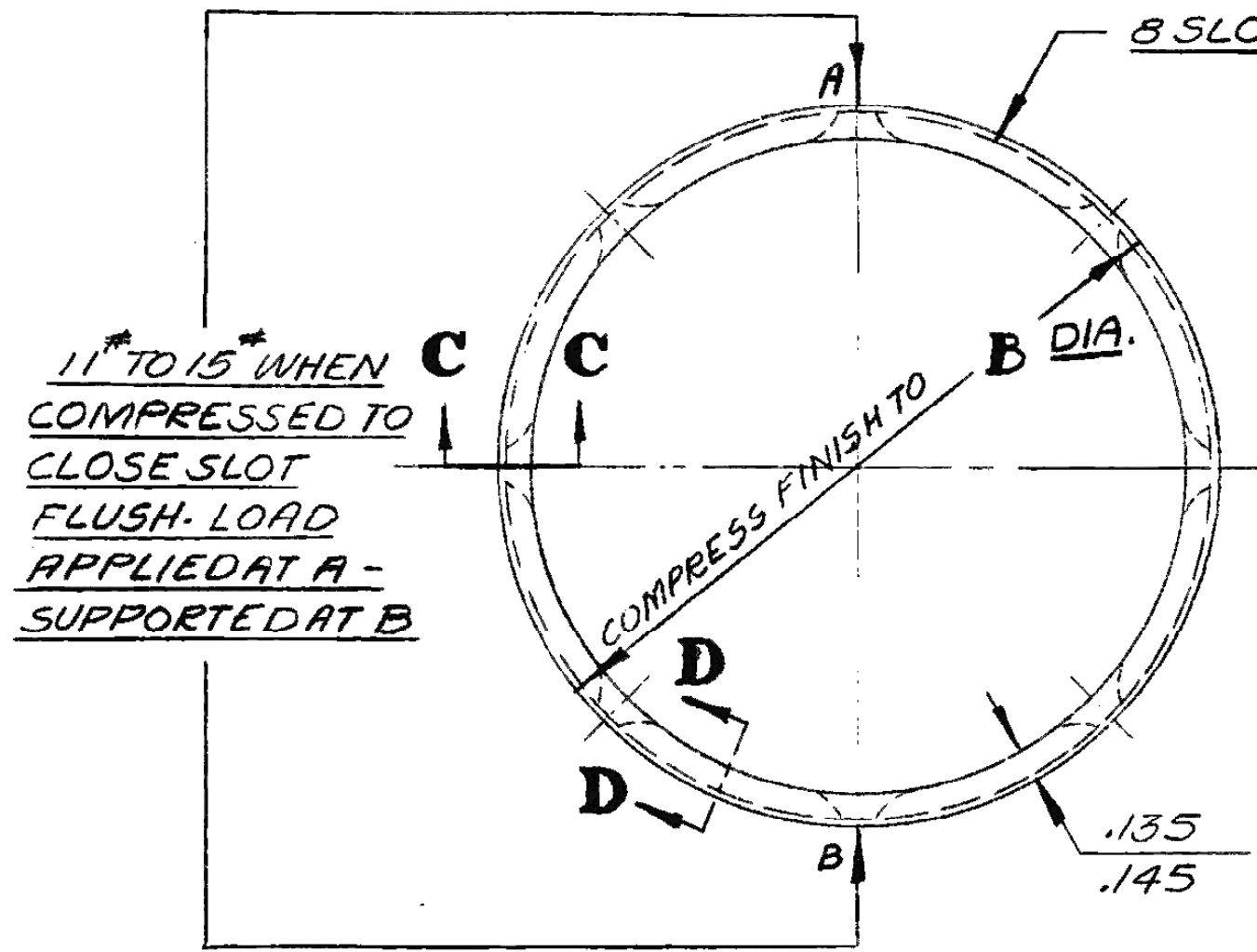
GPW-6156-F	<b>B</b> 3.125 3.126	STD
GPW-6156-G	3.135 3.136	.010 0.5
GPW-6156-H	3.145 3.146	.020 0.5
GPW-6156-J	3.155 3.156	.030 0.5

ALLOWABLE VARIATION ON DIMENSIONS CONTROLLING FINISHED SURFACES IS  $\pm .010$  UNLESS OTHERWISE SPECIFIED. ALL DIMENSIONS IN INCHES.

GPW-6156-K	3.165 3.166	.040 0.5
------------	----------------	-------------

DRWG. STARTED	11-12-41		
DRWG. COMPLETED	11-12-41		
ENG. INF.	SUPP.	REVISED	CK.
L10	1036	9-25-42	F.P.
L10	1506	2-16-44	P.F.
L10	1638	8-23-44	P.F.
L10	1697	1-17-45	P.F.

PLACE LETTER *sp* IN SCRIPT IN CONVENIENT PLACE  
 .187 MAX. AFTER PHOSPHATE COATING



MFG. DPT.	0
M	
H	
BD	
LIN	
DAG	
BEL	
FRA	
GER	
HOL	
SPN	
RUM	
ARG	
DEN	
CORK	
MEX	
USA	
JAP	
AUST	
SWED	
	532

PHOS. COATING P-64

ANALYSIS FOR SINGLE CAST RINGS  
 MN -.60-.80 S-.07 MAX  
 P -.50-.60 SI-2.50-2.90  
 G. CARBON 3.00-3.30 C. CARBON .50-.70  
 ROCKWELL 'B' 103-108 (100 KG 1/16 BALL)

RING-PISTON-OIL REGULATING

11616-STD.	116116-.020 0.5
116115-.010 0.5	116117-.030 0.5

DESIGN	SCALE	DRAWN BY	CK.	O.K.	FORD MOTOR CO. DEARBORN, MICH.
	FULL	HOOVEN			

GPW-6156-F