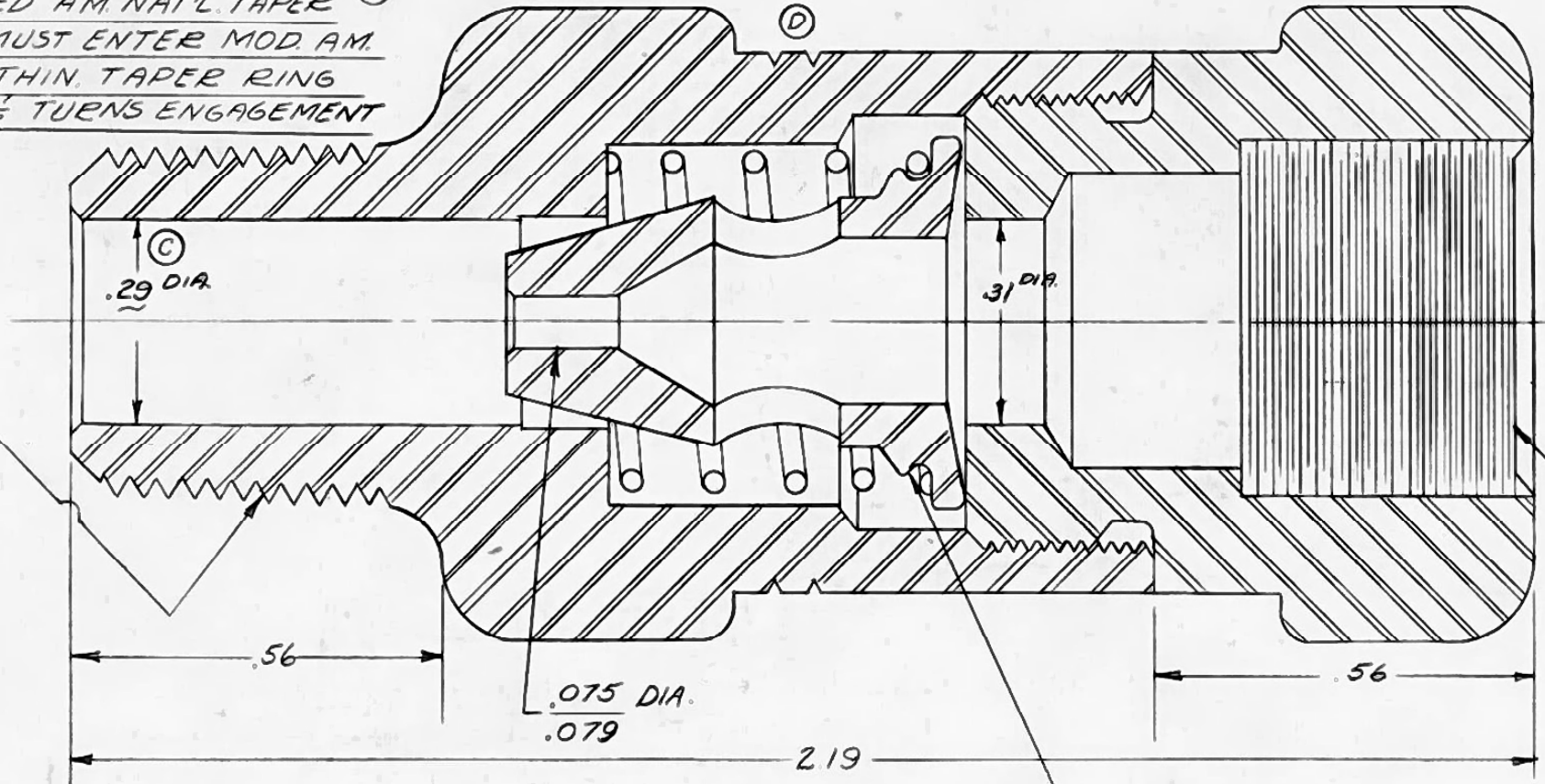


GPW-6769

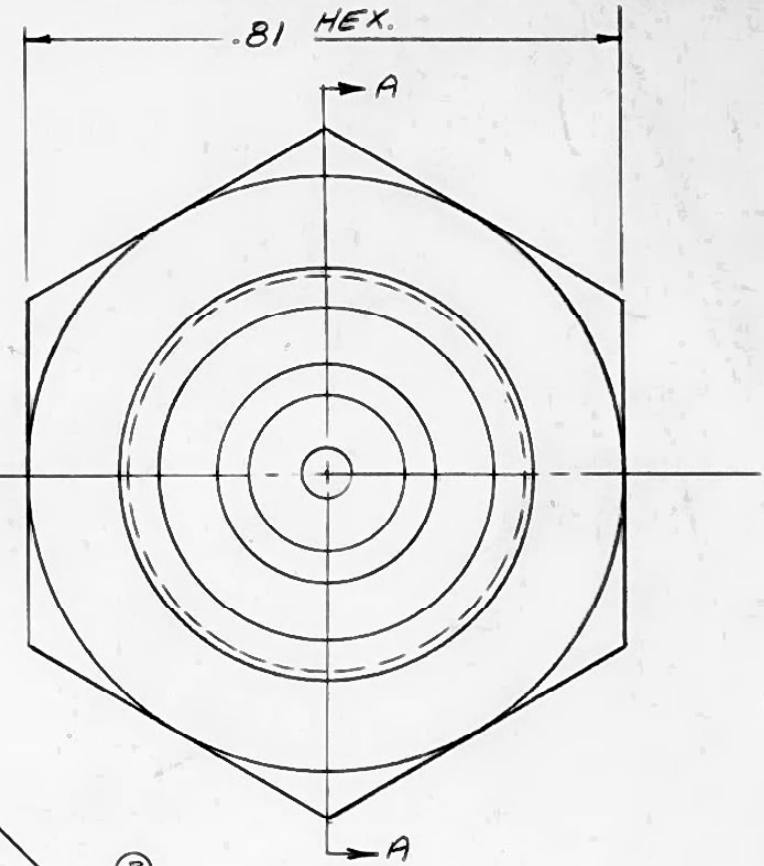
$\frac{1}{4}$ -18 MODIFIED AM. NAT'L. TAPER ^(B)
 PIPE THD. MUST ENTER MOD. AM.
 NAT'L. STD. THIN. TAPER RING
 GAGE $2\frac{1}{2}$ TO $3\frac{1}{2}$ TURNS ENGAGEMENT



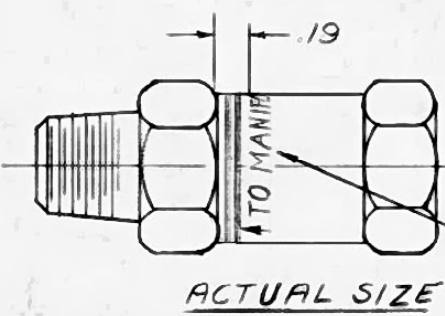
VALVE TRAVEL $\frac{.042}{.023}$

SECTION AA

END OF SPRING MUST BE
 SNAPPED INTO GROOVE IN VALVE



^(B)
 $\frac{1}{4}$ -18 MODIFIED AM. GREASE STR'T PIPE THD
 MODIFIED AM. NAT'L. STD. TAPER PLUG
 GAGE SHOULD ENTER $1\frac{1}{2}$ TO $2\frac{1}{2}$ TURNS
 ENGAGEMENT



^(B)
 A C 1543018 \uparrow TO MANIFOLD \uparrow
 $\frac{1}{16}$ LETTERS, FIGURES & $\frac{1}{8}$ ARROWS

^(A) NOTE ^(E)
 VALVE MUST BE CLOSED WHEN EXTERNAL
 THREADED END IS SUBJECTED TO VACUUM
 OF 16 IN. OF MERCURY, AND START TO OPEN
 BETWEEN 12" & 16" OF MERCURY.

LET	REVISIONS	ENG. INF.	SUPP.	DATE	CK.
E	NOTE REVISED	L10	1307	7-15-43	F.P.
D	ADDED IDENT. GROOVES	L10	1163	3-25-43	F.P.
C	WAS 31 DIA.	L10	1163	" 25"	F.P.
B	NOTES REVISED	L10	1163	" 25"	F.P.
A	NOTE ADDED	L10	1149	2-23-43	R.W.
	RELEASED	L10	1064	10-16-42	R.W.

NAME VALVE ASS'Y - CRANK-CASE VENTILATION

MATERIAL MFG. QTY
0

ALLOWABLE VARIATION ON DIMENSIONS CONTROLLING FINISHED SURFACES IS $\pm .010$ UNLESS OTHERWISE SPECIFIED. ALL DIMENSIONS IN INCHES.

STARTED	COMPLETED	DRAWN BY	CK.	O.K.	SCALE
10-7-42	10-7-42	APSECH			FOUR X

FORD MOTOR COMPANY
 DEARBORN, MICHIGAN

MUST BE CLEAN & FREE FROM CHIPS OR OTHER FOREIGN MATTER

AC 1543018

(W) A-6895

GPW-6769

VALVE ASSY - CRANKCASE VENTILATION

6769

MADE IN U.S.A.