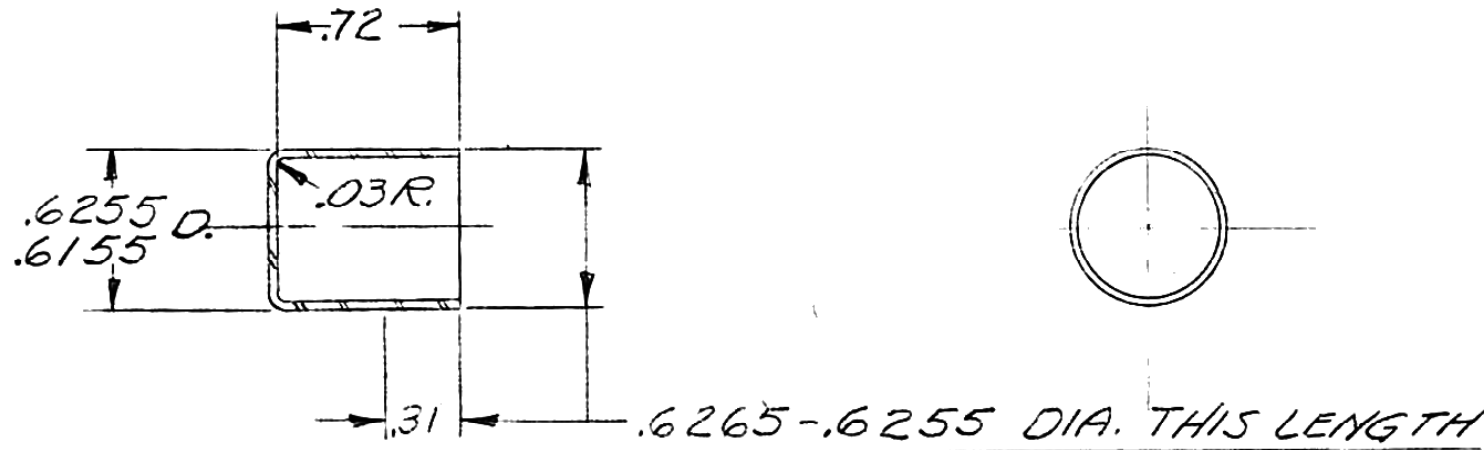


GPW 7056

ALLOWABLE VARIATION ON DIMENSIONS CONTROLLING FINISHED SURFACES IS $\pm .010$ UNLESS OTHERWISE SPECIFIED. ALL DIMENSIONS IN INCHES.

DRWG. STARTED		10-13-41	
DRWG. COMPLETED		10-13-41	
ENG. INF	SUPP.	REVISED	CK.
L10	B	10-27-41	



NOTE:
STAMPING MUST BE FREE FROM BURRS

CUP-TRANS. HIGH & INTER.
GEAR SHIFTER SHAFT OIL RETAINING

C.R. L.C.O.H. STEEL
#22 U.S.S.G.A. (.0299)
PHYSICAL PROPERTIES NECESSARY
TO FORM PART.

MFG. DPT.	0
M	
B	
BD	
LIN	
DAG	
BEL	
FRA	
GER	
HOL	
SPN	
RUM	
ARG	
DEN	
CORK	
MEX	
BRA	
JAP	
AUST	
SWED	
	532

MATERIAL AND NAME

DESIGN	SCALE	DRAWN BY	CK.	O.K.	FORD MOTOR CO.	GPW 7056
WARNER GEAR CO.	FULL	FAWLEY			DEARBORN, MICH.	

4684