

DRWG. STARTED	11-1-41		
DRWG. COMPLETED	11-3-41		
ENG. INF.	SUPP.	REVISED	CHK.
L10	528	12-3-41	RF
L10	762	7-15-42	GR

.25 DIA. PUNCH - 2 HOLES - B
IN GPW1162036 ONLY

SPOTWELD SECURELY
TO SEAT FRAME

CORNERS REMOVED
R2 SHOWN FOR GPW 1162036

.17 DIA. PUNCH - 2 HOLES - A
IN GPW1162036 ONLY

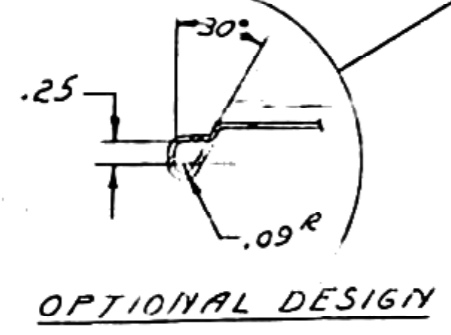
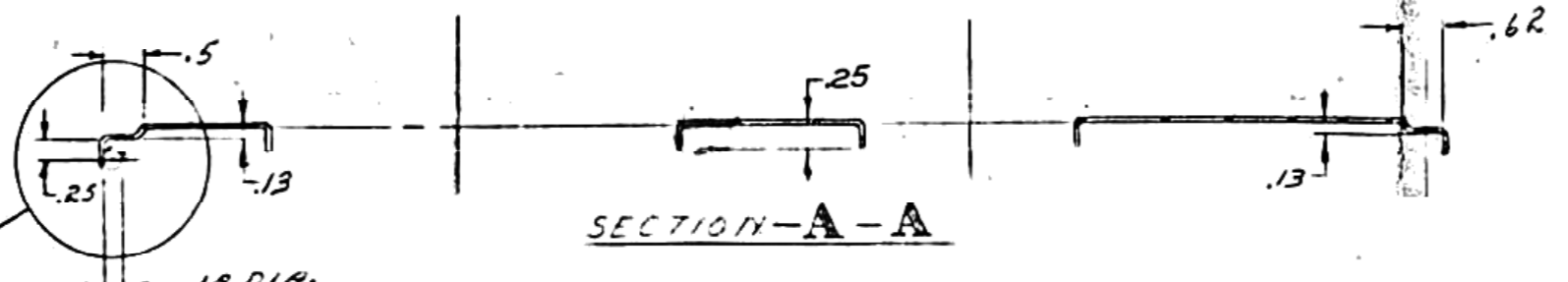
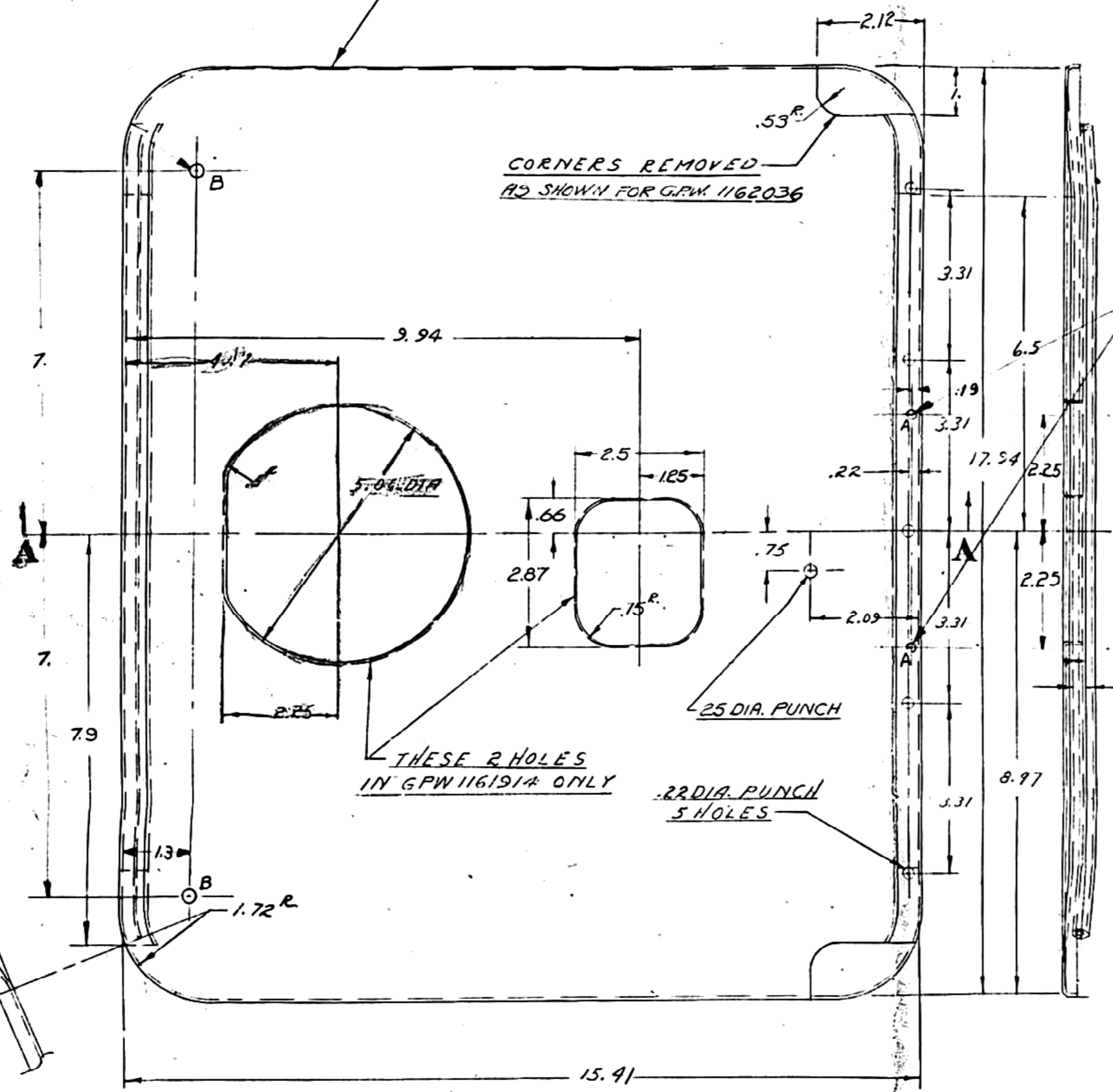
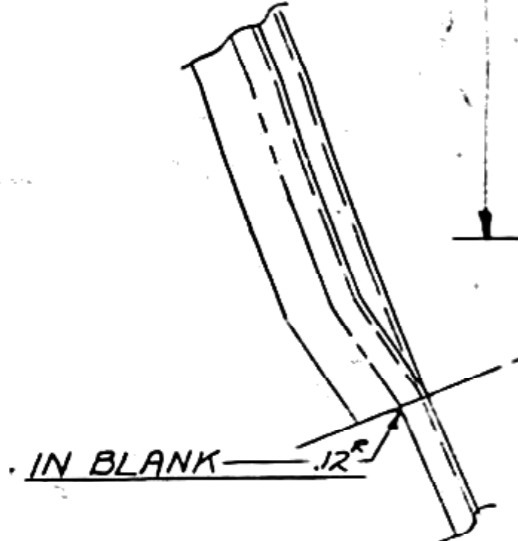
.25 FLANGE - CONSTANT
EXCEPT AS SHOWN
OTHERWISE

THESE 2 HOLES
IN GPW1161914 ONLY

.22 DIA. PUNCH
5 HOLES

GPW-1161914

7-15-42



MFG. OPT.	0
M	
B	
BD	
LIN	
DAO	
DEL	
FRA	
GER	
HOL	
SPM	
SUM	
ARG	
CHI	
COR	
MEX	
BRA	
JAP	
AUST	
SWED	
LIN	

RECORD
L10-774

PAIN - SEAT
CLASS Y H.R.-L.C.-OH STEEL
#20 U.S.S.G.H. (0.035) P.F.O.
SURFACE & PHYSICAL PROPERTIES
NECESSARY TO MAKE PART

GPW1162036	PASS. SEAT
GPW1161914	DRIVERS SEAT

ALLOWABLE VARIATION ON DIMENSIONS CONTROLLING FINISHED SURFACES IS .010 UNLESS OTHERWISE SPECIFIED ALL DIMENSIONS IN INCHES.

DESIGN	SCALE	DRAWN BY	CK.	O.K.	FORD MOTOR CO.	GPW1162036
DRIVER'S SEAT-A-2946	HALF	H. Holderness	RF	B	DEARBORN, MICH.	GPW1161914
PASS. SEAT-A-2945						

7-2946 Pass 1162036. Draw 1161914

MADE IN U.S.A.