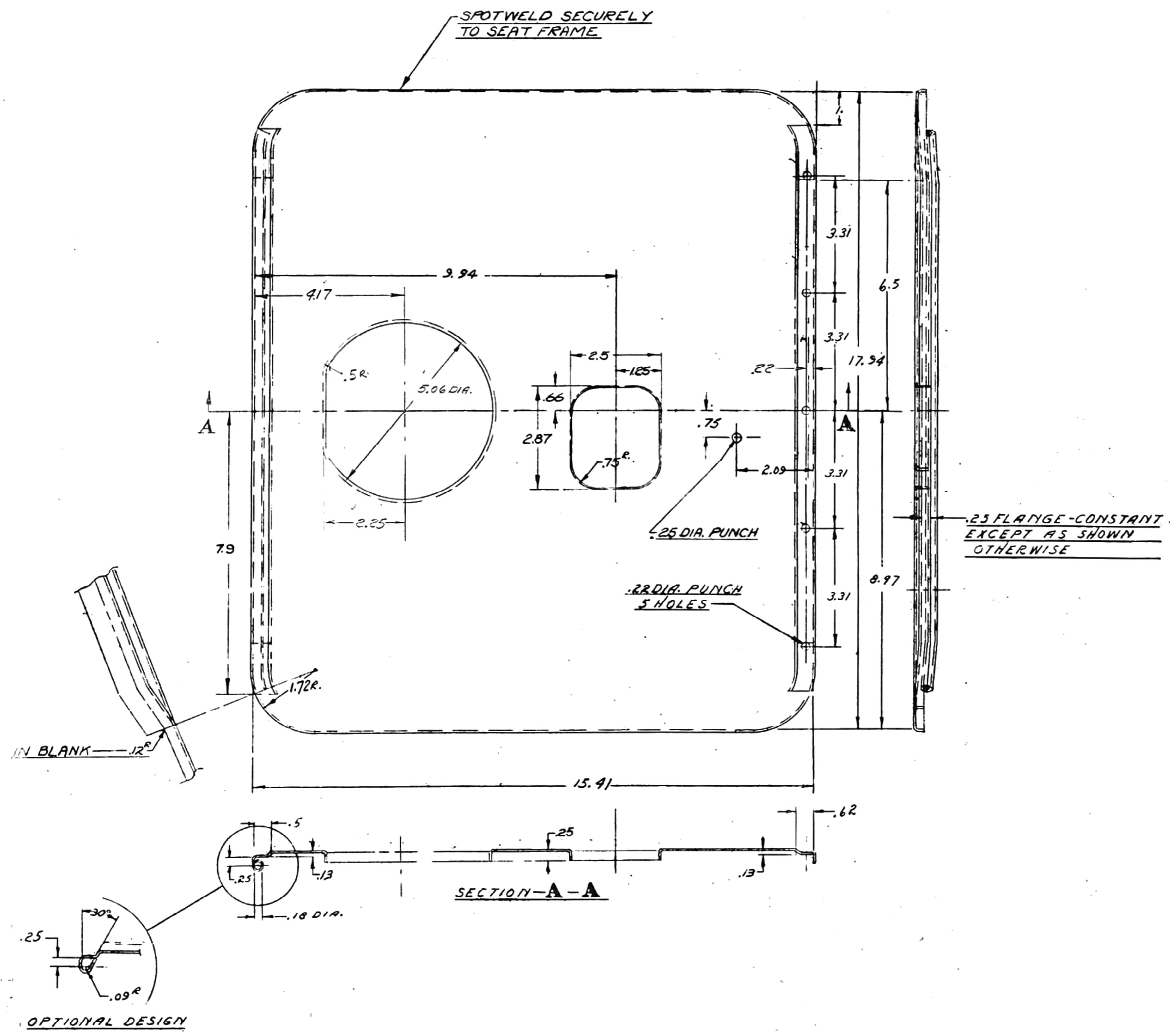


DRWG. STARTED	11-1-41		
DRWG. COMPLETED	11-3-41		
ENGR. INSP.	SUPP.	REVISED	CHK.
L10	528	12-3-41	R.F.
L10	762	7-15-42	GR
L10	774	8-17-42	ESL
L10	798	11-4-42	GM

* R



*Obsolete #10 #853
Replaced BY GPW1161914B
FOR SERVICE*

PAN-SEAT

CLASS Y H.R.-L.C.-OH STEEL
*20 U.S.S.G.A. (0359) P.E.O.
SURFACE & PHYSICAL PROPERTIES
NECESSARY TO MAKE PART

GPW1161914-A — DRIVERS SEAT

ALLOWABLE VARIATION ON DIMENSIONS CONTROLLING FINISHED SURFACES
IS ±.010 UNLESS OTHERWISE SPECIFIED. ALL DIMENSIONS IN INCHES.

DRIVER'S SEAT-A-2326	DESIGN	SCALE	DRAWN BY	CK.	O.K.	FORD MOTOR CO.	GPW1161914-A
PASS. SEAT-A-2545		1/2L	H. Holderness		B		