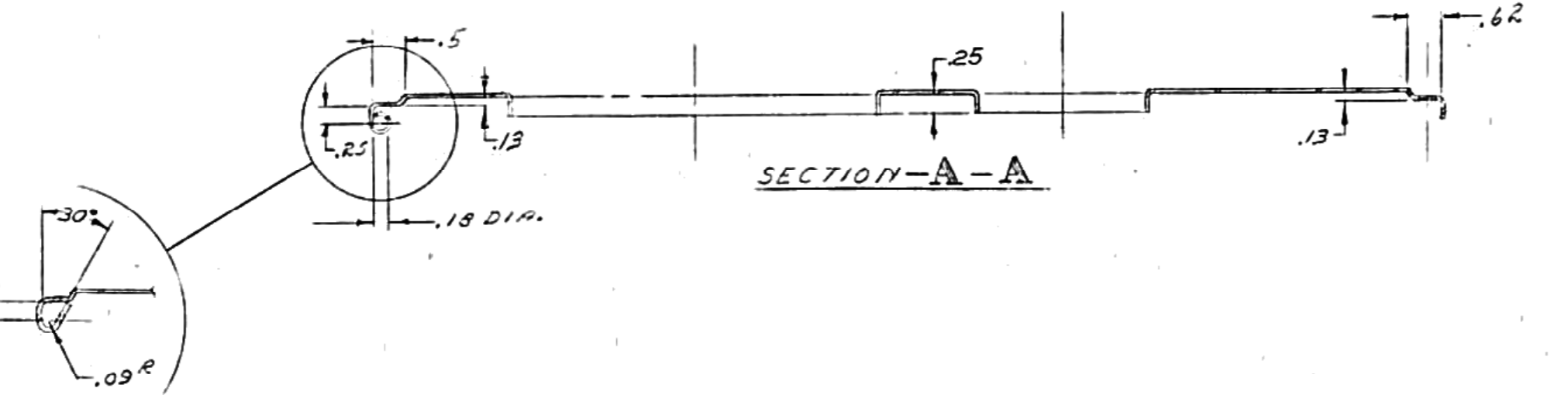
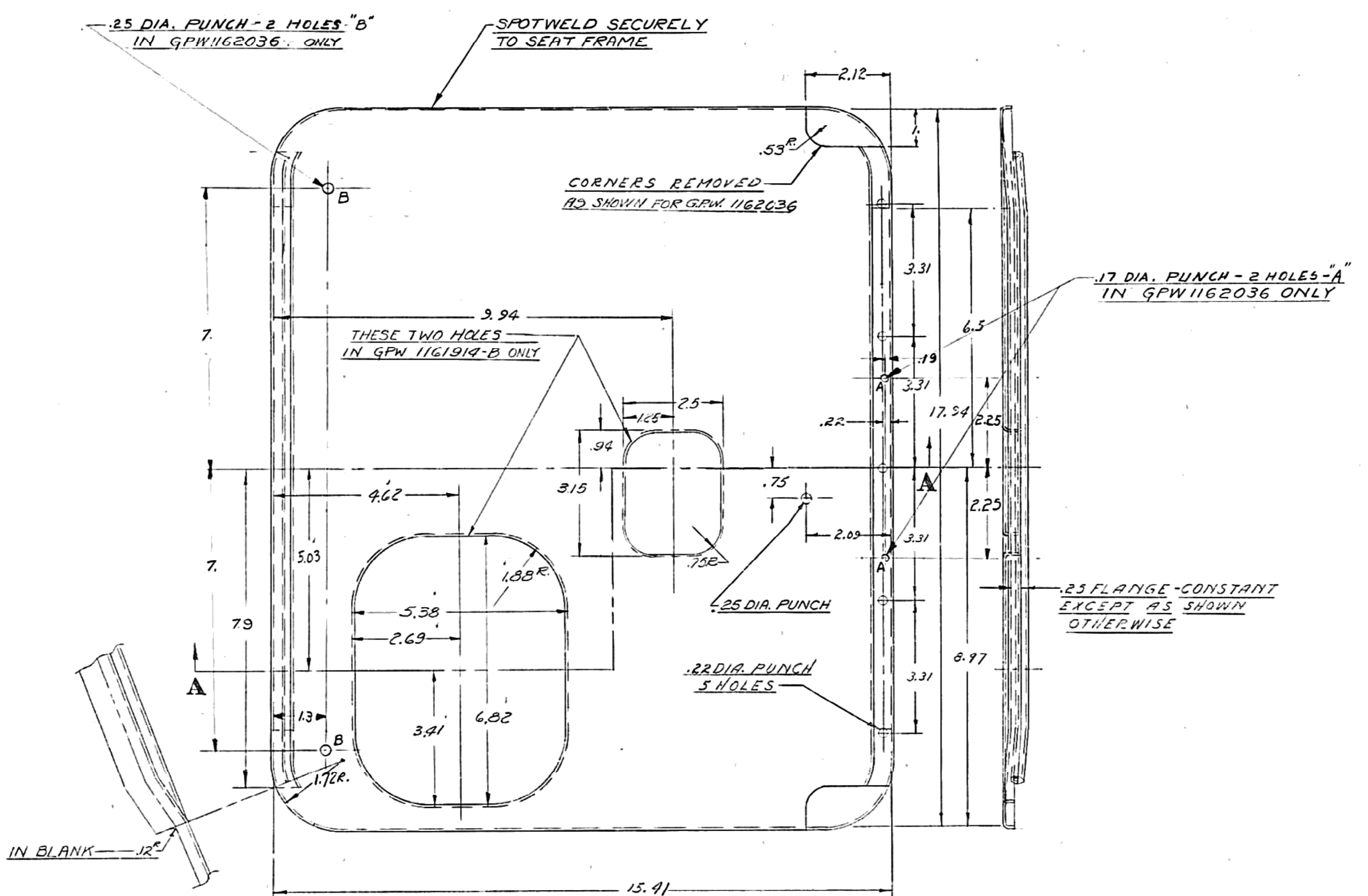


DRWG. STARTED		9-30-42	
DRWG. COMPLETED	9-30-42		
ENG. INCH	SUPP.	REVISED	CK.
L10	798	11-4-42	EL
L10	938	5-20-44	BL



OPTIONAL DESIGN

GPW1162036 — PASS. SEAT
GPW1161914-B — DRIVERS SEAT

ALLOWABLE VARIATION ON DIMENSIONS CONTROLLING FINISHED SURFACES
IS .010 UNLESS OTHERWISE SPECIFIED. ALL DIMENSIONS IN INCHES.

PAN-SEAT
CLASS "Y" H.R.-L.C.-O.H STEEL
#20 U.S.S.G.A. (1,0359) P & O.
SURFACE & PHYSICAL PROPERTIES
NECESSARY TO MAKE PART

DESIGN	SCALE	DRAWN BY	CK.	O.K.	FORD MOTOR CO.	GPW1162036
DRIVER'S SEAT-A-2546	HALF	H. Holderness	GR	B	DEARBORN, MICH.	GPW1161914-B

17-2846 Part 1162036. driver 1161914

- MFG. DPT
- 0
- M
- B
- BD
- LN
- PA
- BEL
- FRA
- GER
- JOL
- SPN
- PUM
- ARG
- GEN
- COR
- MEX
- BRA
- JAP
- AUST
- SWED