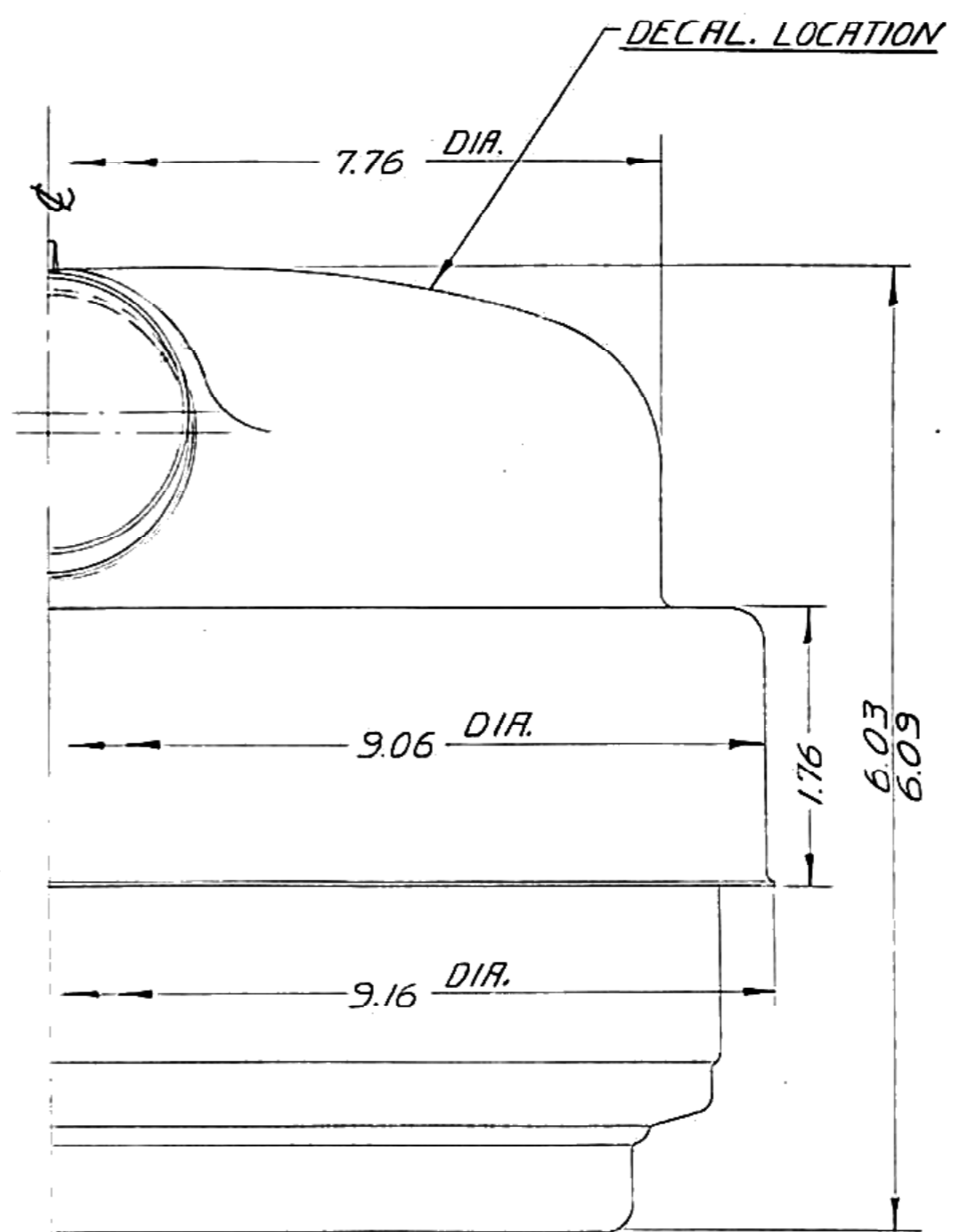
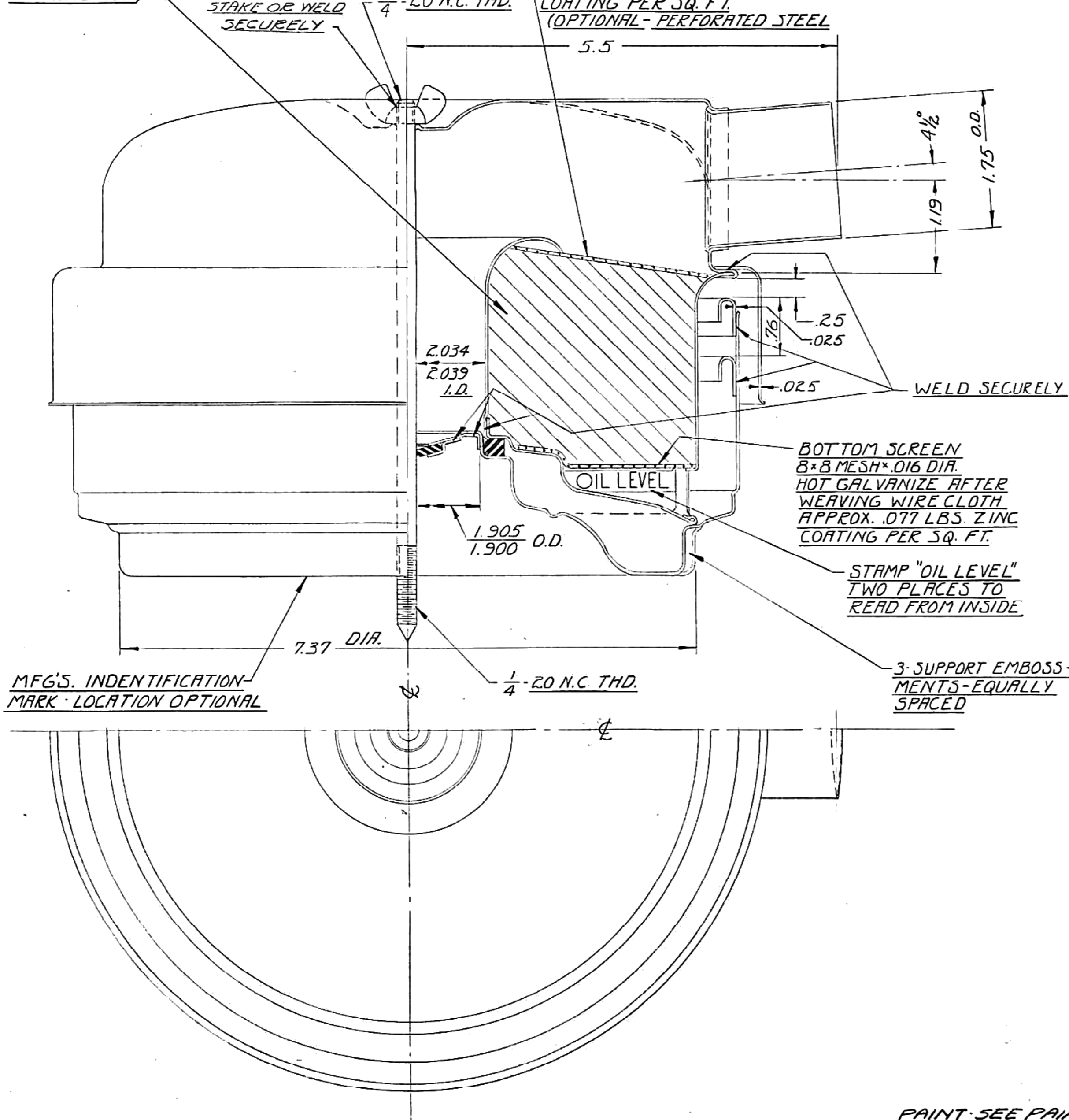


DRWG. STARTED	1-6-41		
DRWG. COMPLETED	1-6-41		
ENG. INF.	K10 #29	REVISED	1-9-41
	K10 #86		2-17-41
	K10 #102		2-24-41

FILTER ELEMENT- TAMPICO CACTUS FIBER
WEIGHT 55.65 GRAMS - TREATED WITH
DI-BASIC AMMONIUM PHOSPHATE BORAX
SOLUTION APPROX. 6.5 GRAMS BY
EXTRACTION

TOP SCREEN
4*4 MESH*.018 DIA.
HOT GALVANIZE AFTER
WEAVING WIRE CLOTH.
APPROX. .063 LBS. ZINC
COATING PER SQ. FT.
(OPTIONAL - PERFORATED STEEL)

BOTTOM SCREEN
8*8 MESH*.016 DIA.
HOT GALVANIZE AFTER
WEAVING WIRE CLOTH.
APPROX. .077 LBS. ZINC
COATING PER SQ. FT.



*Redrawn on
36 size sheet.*

OIL CAPACITY - ONE MEASURED PINT

NET RESTRICTION NOT OVER
3*4 INCHES OF WATER AT
150 CU. FT. PER MINUTE
AIR FLOW.

AIR-CLEANER ASSEMBLY

PAINT - SEE PAINT SPEC.

GP-18205

ALLOWABLE VARIATION ON DIMENSIONS CONTROLLING FINISHED SURFACES IS .010 UNLESS OTHERWISE SPECIFIED. ALL DIMENSIONS IN INCHES

DESIGN	SCALE	DRAWN BY	CK.	O.K.	FORD MOTOR CO.	GP-18205
INDUSTRIAL	FULL	I-W-C WAYNE	✓		DEARBORN, MICH	

MFG. OPT.	0
M	
B	
BD	
LIN	
DAG	
DEL	
T.H.A.	
GER	
HOL	
SPN	
MUM	
ARG	
CFN	
CONK	
MEX	
WRA	
JAP	
AUST	
SWED	

Handwritten signature/initials