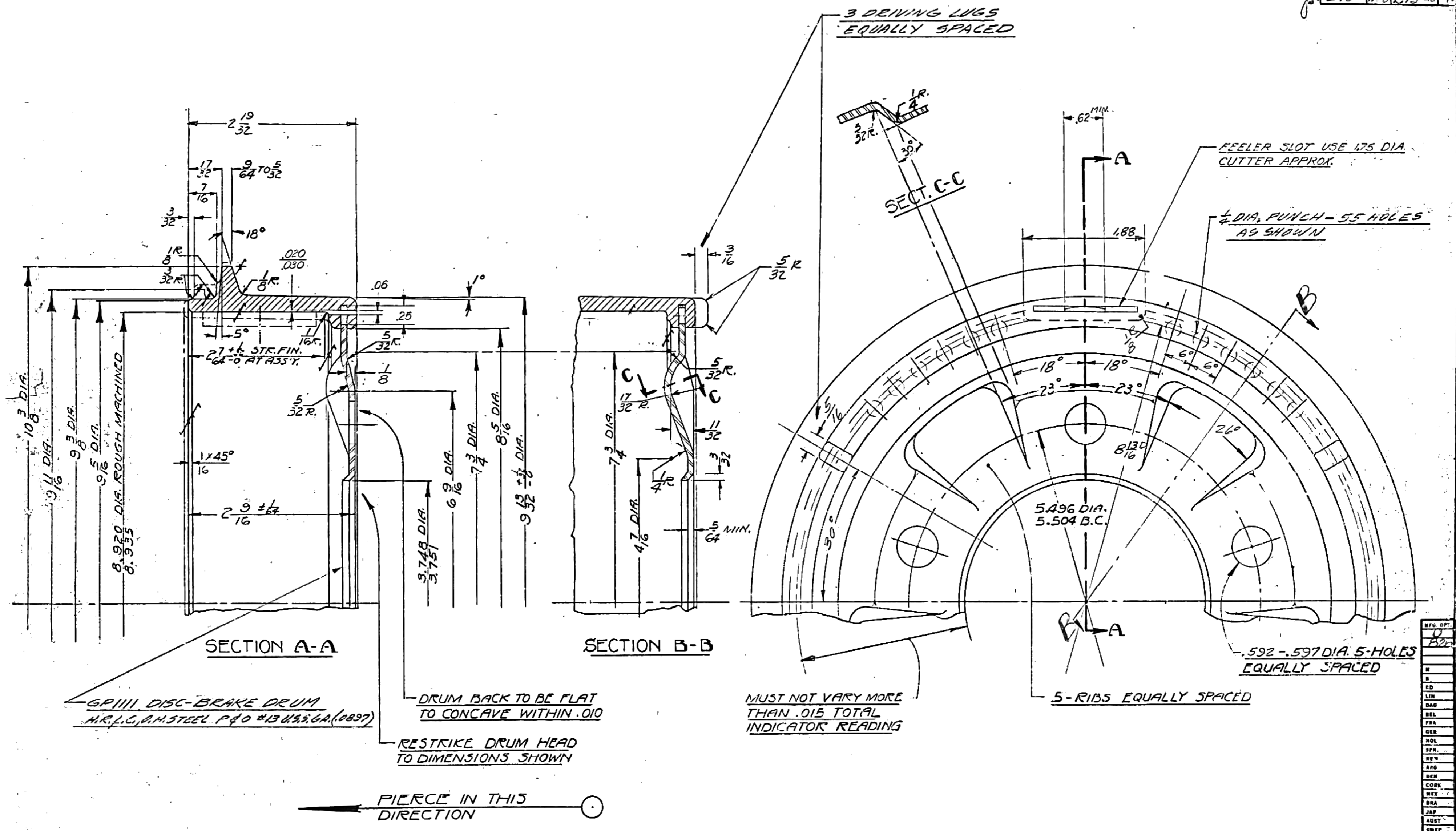


Credit

From the Collections of The Henry Ford.
Gift of Ford Motor Company.

DRWG. STARTED	11-29-40		
DRWG. COMPLETED	11-29-40		
ENG. INF.	SUPP.	REVISED	CK.
K-10	44	12-18-40	W
L-10	52	1-2-41	W
K-10	7138	3-9-41	W
K-10	204	7-16-41	W
L-10	1140	2-13-42	W



GP1111 DISC-BRAKE DRUM
M.R.L.C. AM. STEEL P. 40 #13 U.S.S. GA. (0897)

DRUM BACK TO BE FLAT
TO CONCAVE WITHIN .010

RESTRIKE DRUM HEAD
TO DIMENSIONS SHOWN

PIERCE IN THIS
DIRECTION

NOTE:
DIP OR SPRAY WITH M-1713-A,
BLACK ENAMEL AS SOON AS
POSSIBLE AFTER CASTING

MUST NOT VARY MORE
THAN .015 TOTAL
INDICATOR READING

DRUM-BRAKE ASS'Y

BRKING SURFACE - CAST IRON
ANALYSIS:
TOTAL CARBON 3.30-3.55 NICKLE .15 MAX.
COMBINED CARBON .45-.65 CHROMIUM .20 MAX.
MANGANESE .30-.60 BRINELL 187-228
PHOSPHOROUS .30 MAX.
SULPHUR .10 MAX. (0.7 MAX. DESIRED)
SILICON 2.30-2.60 (2.55 DESIRED)

GP1111	DISC-BRAKE DRUM
GP-1125	DRUM ASSY-BRAKE

ALLOWABLE VARIATION ON DIMENSIONS CONTROLLING FINISHED SURFACES
IS .010 UNLESS OTHERWISE SPECIFIED. ALL DIMENSIONS IN INCHES

24566

DESIGN	SCALE	DR. BY	CK. BY	P.O.D.	FORD MOTOR CO.	GP-1125
KEISEY	FULL	PATTON	W		DRUMING DIV.	

MFG. OP.	0
B	
CD	
LIN	
DAG	
BEL	
FRA	
GER	
HOL	
SPN	
SE	
ARG	
DEM	
CORR	
MEX	
BRA	
JAP	
AUST	
SWEP	