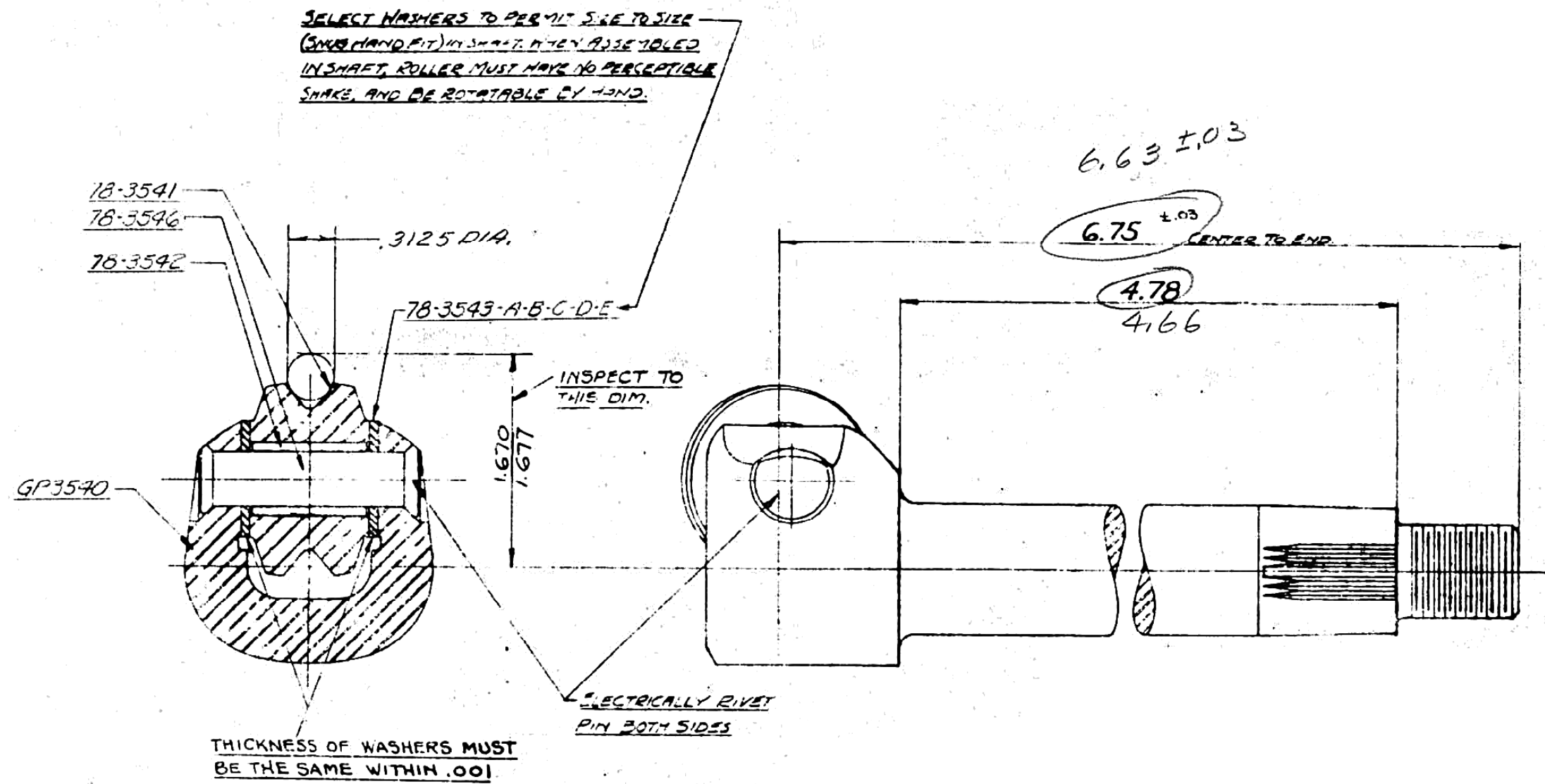


DRWG. STARTED	12-17-40		
DRWG. COMPLETED	12-17-40		
ENG. INF.	SUPP.	REVISED	BY
K-10	#18	12-30-40	GHF
K-10	#52	12841	



SELECT WASHERS TO PERMIT SLIP TO SIZE (SNAP HAND FIT) IN SHAFT. WHEN ASSEMBLED IN SHAFT, ROLLER MUST HAVE NO PERCEPTIBLE SHAKE, AND BE ROTATABLE BY HAND.

INSPECT TO THIS DIM.

THICKNESS OF WASHERS MUST BE THE SAME WITHIN .001.

NOTE:  
SNAP ROLLER TOOTH AND BEARINGS  
THOROUGHLY WITH GREASE, APPROVED  
BY ENGINEERING DEPT. AT ASSK  
SHAFT ASSEMBLIES TO BE INSPECTED 100%

NOTE:  
SHAFT ASSEMBLIES TO BE THOROUGHLY  
DE-MAGNETIZED AFTER RIVETING PIN.

*Record* 3-27-41  
*MEJ*

SHAFT-STEERING SECTOR ASSY.

MSG. DPT.	D
M	
B	
SD	
LIN	
DAG	
BEL	
FRA	
GER	
HOL	
SPN	
RCM	
ARG	
DEN	
CORR	
MEX	
BRA	
JAP	
AUS	
SWED	

ALLOWABLE VARIATION ON DIMENSIONS CONTROLLING FINISHED SURFACES IS ±.010 UNLESS OTHERWISE SPECIFIED. ALL DIMENSIONS IN INCHES.

DESIGN	SCALE	DRAWN BY	CK.	O.K.	FORD MOTOR CO.	GP 3575
GENNER	FULL	LITTEL			DEARBORN, MICH.	

GP 3575

MATERIAL AND NAME