

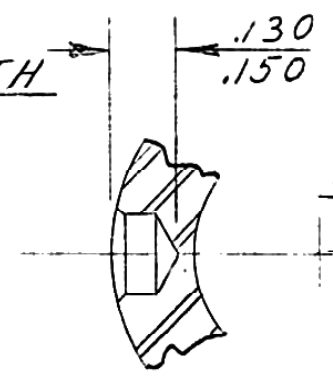
GPW-6610

ALLOWABLE VARIATION ON DIMENSIONS CONTROLLING FINISHED SURFACES IS $\pm .010$ UNLESS OTHERWISE SPECIFIED. ALL DIMENSIONS IN INCHES.

DRWG. STARTED		10-29-41	
DRWG. COMPLETED		10-29-41	
ENG. INF	SUPP.	REVISED	CK.
L10#	17	11-26-41	

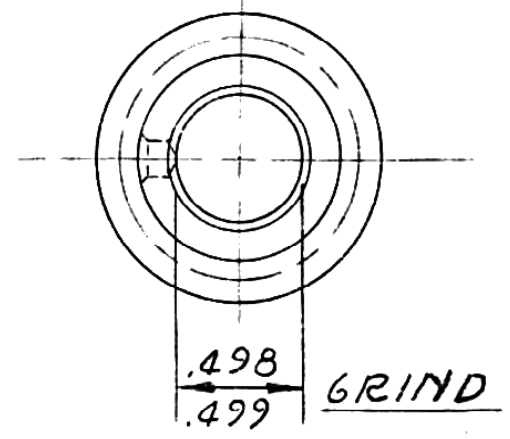
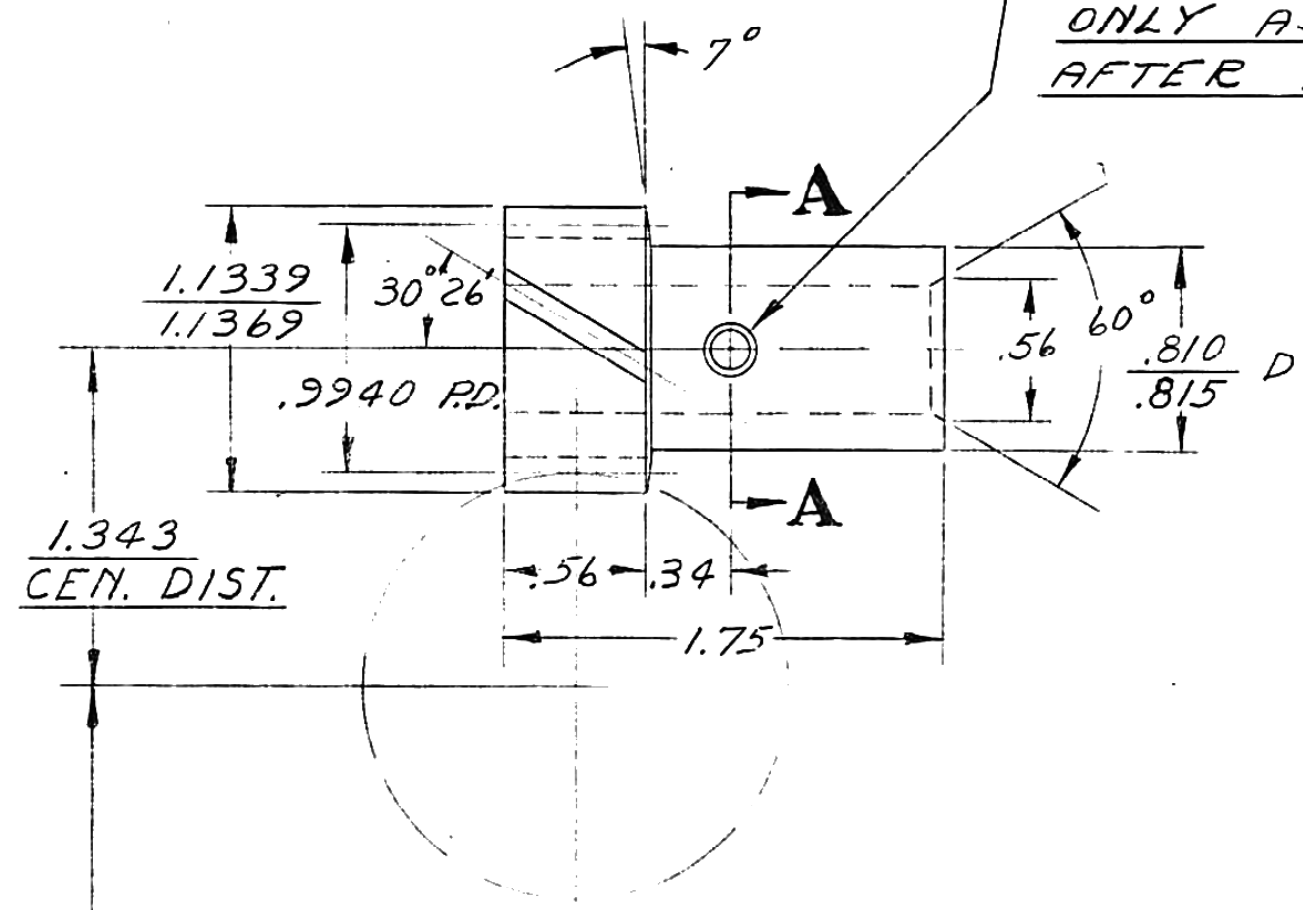
- 14 NORMAL PITCH CUTTER - 12 TEETH
- 14°30' INVOLUTE PRESSURE ANGLE.
- 30°26' ANGLE WITH AXIS - R.H.
- 5.315 HELICAL LEAD
- .0738 CORR. ADD.
- .1120-.1121 CHORDAL THICKNESS
- .002 ALLOWABLE ECCENTRICITY
- FINISH ALL OVER.

PLACE LETTER *G* IN SCRIPT
IN CONVENIENT PLACE



SECTION A-A
DOUBLE SIZE

5/32 DRILL - C'SK 45° X .03 ONE SIDE
ONLY AS SHOWN. DRILL THRU
AFTER ASSEMBLY TO SHAFT.



MUST BE CUT TO HAVE .001-.008
BACKLASH WHEN MATED WITH
MASTER CAMSHAFT GEAR AT
1.343 CENTERS.

MFG. DPT.	0
M	
B	
BD	
LIN	
DAG	
BEL	
FRA	
GER	
HOL	
SPN	
RUM	
ARG	
DEN	
CORK	
MEX	
BRA	
JAP	
AUST	
SWED	
	532

GEAR-OIL PUMP-DRIVEN
TYPE "A" CAST IRON
BRINELL HARDNESS 179-228

(W) 637425

DESIGN	SCALE	DRAWN BY	CK.	O.K.	FORD MOTOR CO.
	FULL	DICKINSON	W		DEARBORN, MICH.

GPW-6610

MATERIAL HAND NAME