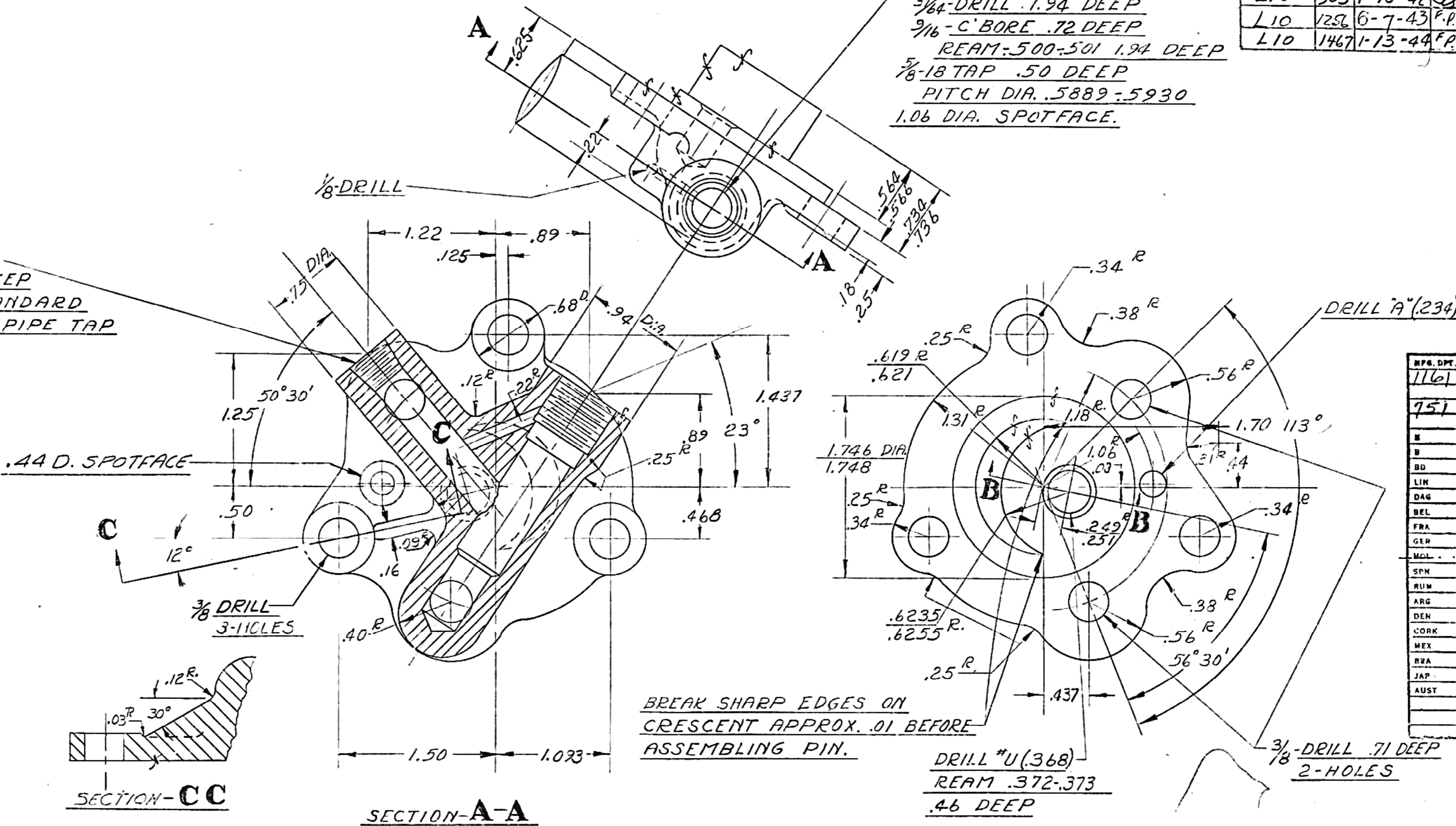


DRWG. STARTED	10-20-41		
DRWG. COMPLETED	10-20-41		
ENG. I/P	SUPP.	REVISED	CK.
L10 #	11	11-8-41	
L10	169	2-13-42	AT
L10	305	4-10-42	Q
L10	1256	6-7-43	F.P.
L10	1467	1-13-44	F.P.

3/8-DRILL 2.62 DEEP  
3/64-DRILL .194 DEEP  
7/16-C BORE .72 DEEP  
REAM-.500-.501 1.94 DEEP  
5/8-18 TAP .50 DEEP  
PITCH DIA. .5889-.5930  
1.06 DIA. SPOTFACE.

1/32 DRILL  
2.00 DEEP  
1/8 AM. STANDARD  
TAPER PIPE TAP



REP. DPT.	1161
	751
N	
B	
BD	
LIH	
DAG	
BEL	
FRA	
GER	
MCL	
SPN	
RUM	
ARG	
DEN	
COR	
MEX	
BRA	
JAP	
AUST	

CASTING MUST BE FREE OF SCALE,  
SHRINKS, CHILLS, OR OTHER  
IMPERFECTIONS.

COVER-OIL PUMP  
GRADE "B" CAST IRON  
BRINELL HARDNESS 143-179

PLACE LETTER *F* IN SCRIPT  
 IN CONVENIENT PLACE

ALLOWABLE VARIATION ON DIMENSIONS CONTROLLING FINISHED SURFACES  
 IS ±.010 UNLESS OTHERWISE SPECIFIED. ALL DIMENSIONS IN INCHES. (W) 630388

GPW-6616

DESIGN	SCALE	DRAWN BY	CK.	O.K.	FORD MOTOR CO.	GPW-6616
	FULL	DICKINSON			DEARBORN, MICH.	

MATERIAL AND NAME